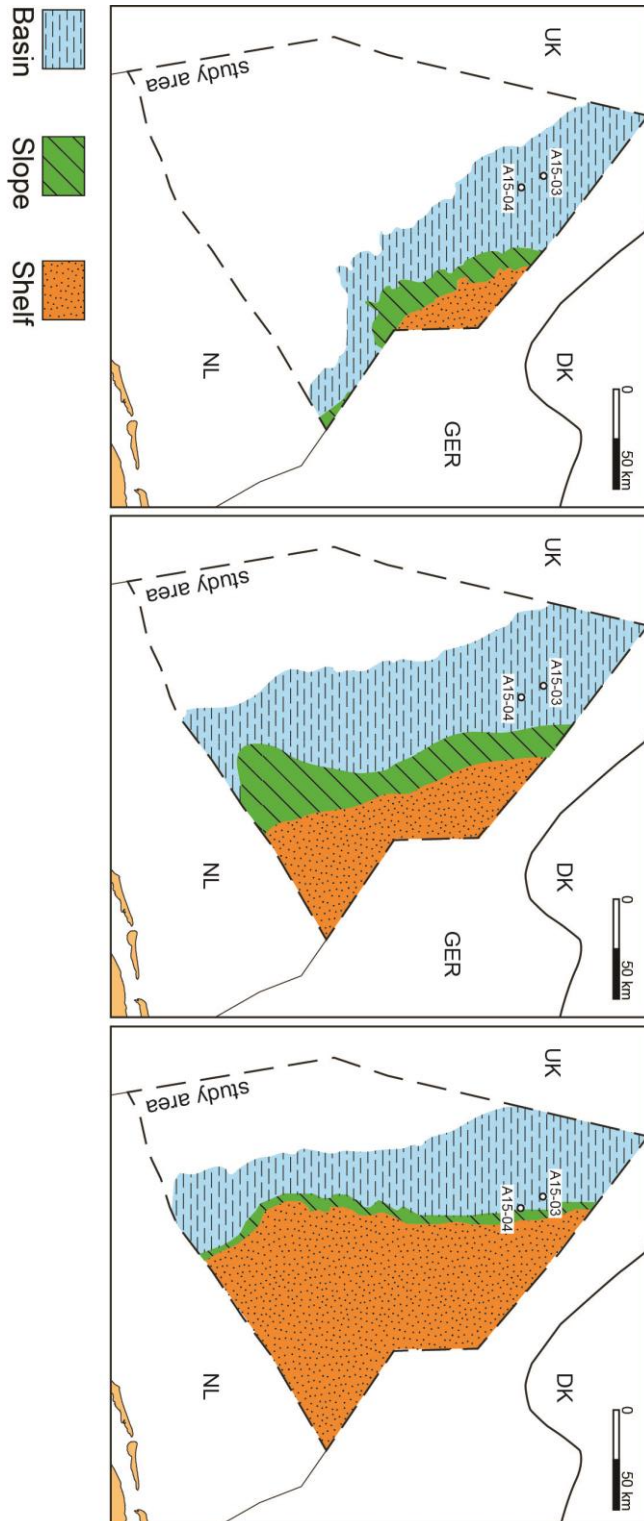
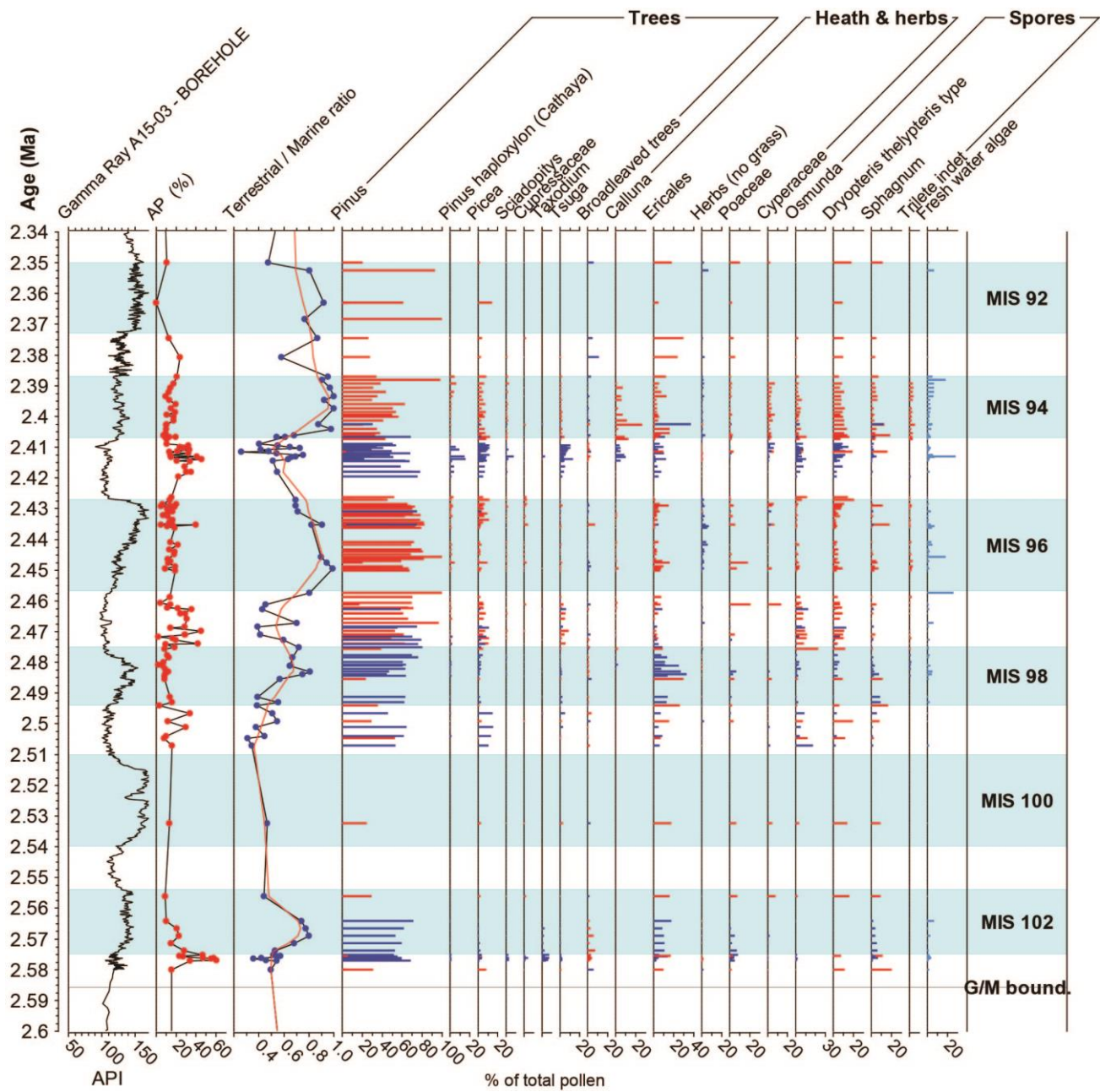


## 1 Supplementary figures and data descriptions

2 **Supplementary Figure 1:** sedimentary facies interpretation of high-resolution seismically  
3 mapped surfaces S4-6 (see Fig. 2 for stratigraphical position) in relation to the wells.

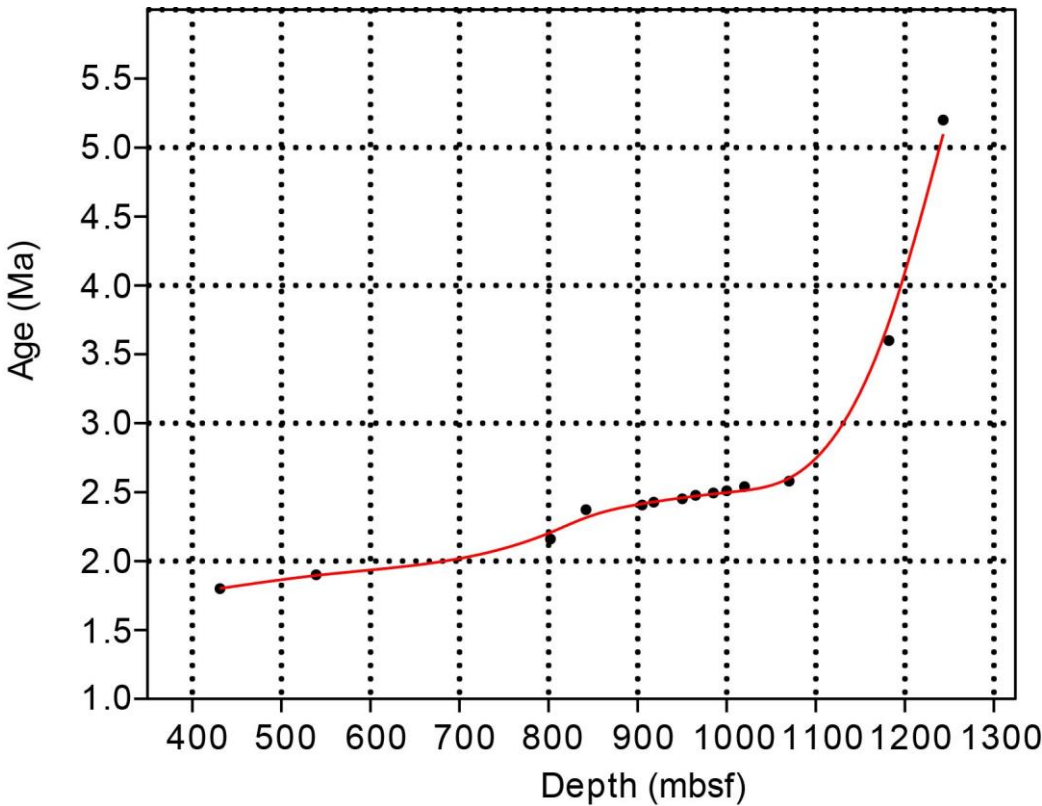


6 **Supplementary Figure 2:** Main pollen types in the spliced record of A15-3 (blue) and A15-4  
 7 (red) expressed as percentages of the total pollen.



**Supplementary Figure 3:**

Age-depth model of the spliced A15-3 and A15-4 sections based on LOESS smoothing spline interpolation (range 0.15) of tie age points from Kuhlmann et al. (2006ab).



**Supplementary Table S1**

Palynological abundance data of A15-3 and A15-4 by taxon and composite indices as displayed in Fig. 3. Percent data are based on a separate marine and terrestrial total.

**Supplementary Table S2**

Borehole Gamma Ray data (A15-3) and geochemical data of A15-3 and A15-4 (O and C stable isotope ratios, TOC, Alkane ratios, brGDGTs).